

AMA Alliance Celebrates 80 Years



For the past seven years, the SAVE (Stop America's Violence Everywhere) program has been the cornerstone of AMA Alliance public health initiatives. Since its inception, the program has changed and grown to meet the changing needs of the Alliance and its communities. Through SAVE-A-Shelter and SAVE Schools from Violence more than 600 county and state Alliances provide schoolchildren, battered women and their families, and homeless families with financial and emotional support and simple, effective lessons in conflict resolution.

The House of Delegates

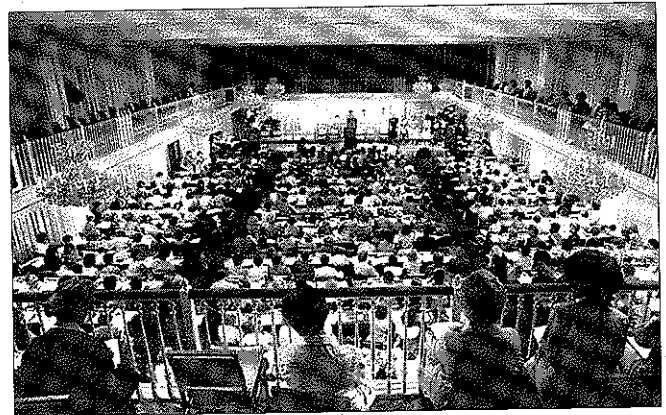


Past Presidents luncheon at 1953 Annual Convention

It has become a tradition for the Annual Convention to be held at the same time and place as the Annual Session of the AMA. Today, as in the past, all Alliance members and physicians' spouses are invited to attend the policy-making meeting, however, only delegates can vote.

The Annual Conventions of 1943 and 1945 were cancelled because of World War II, although in 1943 there was a meeting of the House of Delegates and in 1945 a meeting of the Board of Directors. Since the Constitution and Bylaws did not include a provision for the election of officers without an Annual Meeting, the 1944-45 national leaders continued in office the following year.

The following "Pledge of Loyalty" was written by Mrs. James P. Simonds of Chicago and was adopted at the 1943



1980 Annual Convention

meeting of the House of Delegates: "I pledge my loyalty and devotion to the Woman's Auxiliary to the American Medical Association. I will support its activities, protect its reputation and ever sustain its high ideals." For many years, the pledge was recited at the opening of the Annual Convention.

The president's pin and gavel

At each Annual Convention since 1928 the Alliance has presented to the incoming president a pin having the design of one half of the medical caduceus and the letters W.A.A.M.A. engraved on it. Upon direction of the 1998 House of Delegates, the pin was modified slightly to reflect the organization's name change to AMA Alliance. The pin is worn during the president's term of office, and at its termination is handed down to her successor, while she—as retiring president—is presented with a pin of like design in appreciation of her service. The following passage from the minutes of the executive board meeting on June 12, 1928 explains why the right side of the caduceus was chosen as the design for the president's pin.

"It was explained that the caduceus is only worn after a medical man has completed his years of preparation and of course could not be worn by the wives of these men. However, it was decided to take the central torch and the right side as the token of 'the better half on the



The president's pin as it looks today.

AMA Alliance Celebrates 80 Years



1971-72 Woman's Auxiliary to the AMA President Mrs. G. Prentiss Lee presents the president's pin to her successor Mrs. Robert F. Beckley.

right side.' A pin was designed, hand wrought and set in nine diamonds to be worn by the president through her year in office and passed on to each succeeding presiding officer."

The Auxiliary received its first gifts at the Annual Convention in San Francisco in 1923, when Mrs. W. A. Wood of Texas, the first national recording secretary, presented to the Auxiliary a loose-leaf secretary's book with its black leather cover stamped in gold "In the Beginning, St.



1961-62 Woman's Auxiliary to the AMA President Mrs. Harlan English receives the customary gavel from her predecessor Mrs. William Mackersie.

Louis, June 1922." As president of the Auxiliary of Texas, she presented, at the same time, the gavel from the state of Texas to the physicians' wives of America. The gavel, made of oleander wood from the Galveston coast, is meant to whisper the "Mother Spirit of Texas" whenever it is used.

The first male member

At the 1970 Annual Session in Chicago, Woman's Auxiliary to the AMA President Mrs. John M. Chenault presented Fred Gloeckner of Pennsylvania (below) with a special membership certificate "in appreciation of his continuous support for American medicine." Gloeckner's wife, M. Louise C. Gloeckner, MD, retired as AMA vice president that same year. In 1973, an official Bylaws revision was made to include a provision for male spouses to be members of the organization.



1969-70 Woman's Auxiliary to the AMA President Mrs. John M. Chenault awards Fred Gloeckner of Pennsylvania with a special membership certificate.